

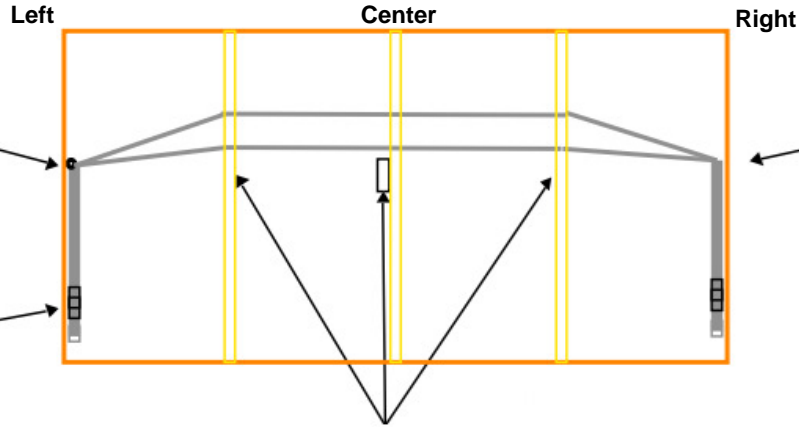
SMR Modular Specifications

Modular Wiring Location Requirements

Basic 48" x 24" Module

Drawing is of the underside of a module

Module Front



Wires are anchored with zip ties and eye bolt, 8" from the module front (or 1" behind the rear of the 7" Main Track.

Each Module has a 1" I.D PVC, 3" in length, with a 3/8" Full Length Slot and a Velcro wrap to contain the wires. It is mounted 18" from the module front.

Suggested "Screw Terminal Block" mounting points

The "Anchor Points" for wire bundles are 13" from the end of the Anderson plugs on the "Left Side." On the "Right Side" the Anderson plug for the previous DCC Network cable has a RJ45 Coupler, making the "Anchor Point" 16"



RJ45 Coupler

The 5" and 7" Main lines each have Separate Boosters for power. They are also Isolated from ALL other tracks on the Module.

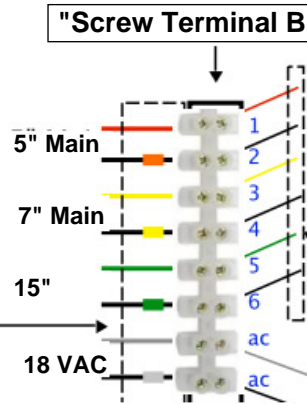
The 15" Line Booster supplies track power to ALL other tracks on the Module.

SMR Wire & Anderson Powerpole Colors
 5" Line = RED / BLACK with Red Shrink Wrap
 7" Line = YELLOW / BLACK with Yellow Shrink Wrap
 15" Line = GREEN / BLACK with Green Shrink Wrap
 18 VAC = WHITE / BLACK with White Shrink Wrap



Drawing NOT to Scale

Connect Incoming Power to Top of "Screw Terminal Block" (Side closest to blue/pink foam)



ALL connections to the "Module Power" WILL ONLY be made VIA the 8-Position Screw Terminal Strip. ABSOLUTELY NO other connections may be made to the "Module Power" wires!

BOTTOM
 (Floor Side of "Screw Terminal Block")
 ALL Track connecting wires are "20 AWG Solid Wire"